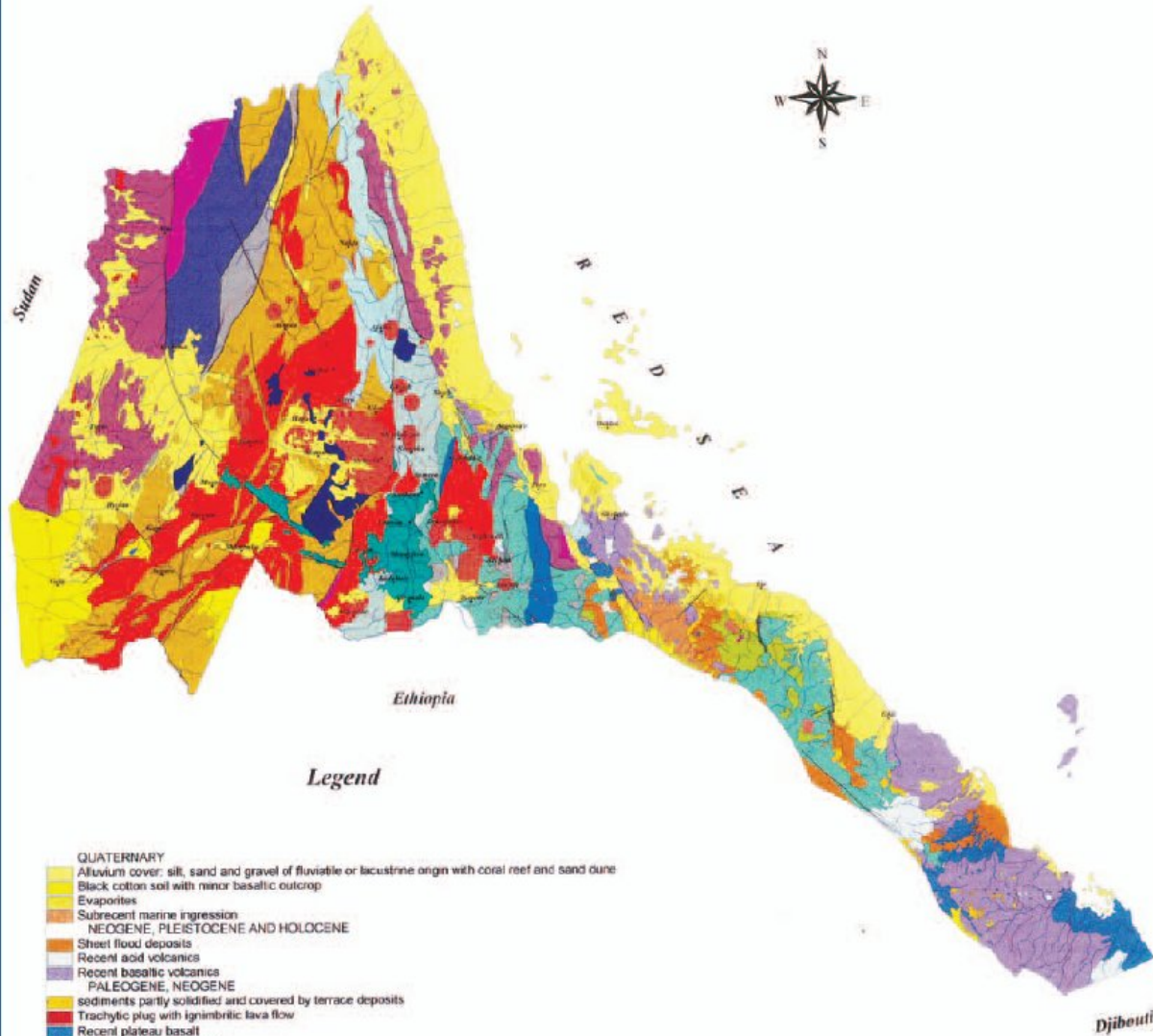


# GEOLOGICAL MAP OF ERITREA



## Legend

- QUATERNARY
  - Alluvium cover: silt, sand and gravel of fluvial or lacustrine origin with coral reef and sand dune
  - Black cotton soil with minor basaltic outcrop
  - Evaporites
  - Subrecent marine incursion
- NEOGENE, PLEISTOCENE AND HOLOCENE
  - Sheet flood deposits
  - Recent acid volcanics
  - Recent basaltic volcanics
- PALEOGENE, NEOGENE
  - sediments partly solidified and covered by terrace deposits
  - Trachytic plug with ignimbritic lava flow
  - Recent plateau basalt
  - Trap series plateau basalt
- MESOZOIC
  - Laterite
  - Limestone
  - Sand stone
- PALEOZOIC
  - Post tectonic peralkaline granite
- PROTEROZOIC
  - Post tectonic granite
  - Meta gabbro
  - Syntectonic granite and granodiorite
  - Marble and other meta sediments
  - Very low grade metamorphic rocks ( carbonaceous rocks, phyllites, and acid volcanics)
  - Very low grade metamorphic rocks mainly basic volcanics
  - Very low grade volcano-sedimentary rocks
  - Low grade metamorphic rocks (basic metavolcanics, chlorite schist, etc.)
  - Medium grade metamorphic rocks ( amphibole schist, biotite amphibole schist, chlorite amphibole schist)
  - Meta mafic rocks
  - Meta mafio-ultra mafic rocks with oiklostromo assemblages
  - High grade metamorphic rocks (granitic gneiss, amphibole gneiss, pegmatitic gneiss and kyanite bearing gneiss)

Faults ————

Rivers and streams ————

0 50 100  
kilometres